

# Amtico Décor Collection

Premium LVT flooring

---

UK made to order

---

1.0 mm wear layer

# Contents

Always daring, never dated	4
Venetian Parquet Wood	12
Venetian Parquet Stone	14
Akari Lattice Large	16
Akari Lattice Small	18
Corinthian	20
Temple Diamond	22
Rosette Motif	24
Victorian Star Large	26
Victorian Star Small	28
Octagon Key	30
Classic	32
Geo	34
Echo	36
Chequer	38
Borders and Corners	40



DC472, Plank Divider & Stripwood Perimeter Area

# Always daring,

Premium flooring that  
always demands attention.

Introducing a new collection of  
striking statement floors inspired by  
timeless styles. Décor doesn't just turn  
heads, it invites closer exploration.



20YR COMMERCIAL  
WARRANTY

## never dated.

Meticulously curated colours, patterns  
and textures, all full of character and  
exuding refinement. And every inch  
hand-finished to artisanal standards,  
protected by our most advanced wear  
layer technology.

Make a timeless statement, with Décor.

DC613, Polished Gold Striping & Changot Oak Plank Border





DC619, Polished Gold Stripping & Chatham Concrete Field Tile

# 60 years in the making

With 60 years of British manufacturing expertise, it's not just design heritage you'll find in an Amtico Décor floor.

Each Décor pattern is made up of multiple precision cut and bevelled pieces, using designs from Amtico's premium Signature collection.

Made to order in the UK by our highly skilled manufacturing teams, Décor is supplied either as pre-assembled and taped modules, or as individual pieces. Perfect for creating feature spaces or focal points when paired with our Signature floors.





DC620 & Hackfall Oak Field

## A perfect pairing

Amtico Décor and the National Trust is a harmonious collaboration celebrating the admired qualities of traditional design, reimagined for the modern world.

Inspired by historic designs and patterns featured in places cared for by the National Trust, this collection carries the heritage of the past into beautiful statement flooring for any commercial space.

As part of Amtico's commitment to sustainability, sales of this collection will continue to help the National Trust to look after the 500 places, 780 miles of coastline and 250,000 hectares of land in its care. Some of these projects will help to establish and conserve woodlands, create new habitats for wildlife and protect biodiversity.

Amtico Décor ×  National Trust



# The Kedleston Hall Edit

Nestled in the Derbyshire countryside lies Kedleston Hall. Built in 1765 by renowned British architect Robert Adam who also shaped the architecture of 18th Century Britain. Bursting with intricate detail and ornate features, the hall is a wonderfully unique and effortless choice to inspire our second collection with the National Trust.

Kedleston Hall is packed with captivating features that exude character and inspiration. From its intricate carvings and plaster mouldings to its elegant needlework and classic art, this historic location has been a source of creative influence for the Amtico Design team.

# Venetian Parquet Wood

A pattern that takes direct inspiration from Lady Curzon's Peacock Dress. Venetian Parquet Wood cleverly balances proportions and angles to create a pattern that nods to traditional parquetry, but with a refined contemporary edge.

Venetian Parquet Wood features delicate geometries designed to highlight grain directionality, resulting in a stunning feather-inspired effect that can flood a space or create a beautiful feature area.

Assembled Tile



Supplied as individual precision-cut pieces.

Amtico Décor ×  National Trust

1 Pattern  
4 Colourways



DC611



DC611



DC612



DC613

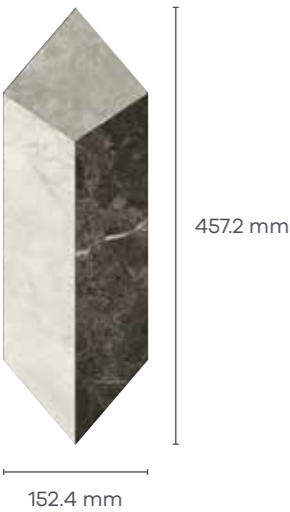


DC614

# Venetian Parquet Stone

Putting a glamorous twist on the unique Venetian Parquet geometry, two elegant marble combinations bring a striking, Art Deco feel to this directional pattern.

Assembled Tile



Supplied as individual precision-cut pieces.

Amtico Décor ×  National Trust

2 Colourways 1 Pattern



## Inspiration Story

The unique geometric shape of Venetian Parquet Wood and Stone was inspired by Mary Curzon's beautiful 1903 peacock dress, which is displayed at Kedleston Hall.



DC615



DC616

DC615, Bespoke Stripping & Perimeter Tiles in Grigio & Nero Classic Marble & Encaustic Kyanite

# Akari Lattice Large

Inspired by the detailed fretwork of a John Linnell chinoiserie cabinet found in Kedleston Hall, Akari Lattice is a delicate pattern that highlights the tonal features of four Signature wood grains.

Assembled Tile



304.8 mm

304.8 mm

Individual precision-cut pieces, supplied in a pre-assembled and taped module.

Amtico Décor ×  National Trust

4 Colourways 1 Pattern



DC607



DC608



DC609



DC610

DC610, Toy Oak Double Plank Border & Deptford Concrete Field

# Akari Lattice Small

Akari Lattice's woven features are even more intricate in this small-scale design. An elegant pattern that will zone a space in a subtle, refined way.

Assembled Tile



Individual precision-cut pieces, supplied in a pre-assembled and taped module.

Amtico Décor ×  National Trust

4 Colourways 1 Pattern



## Inspiration Story

The delicate pattern is inspired by a beautiful gilt fretwork cabinet, commissioned around the 18th century and crafted by famous London cabinet maker John Linnell.



DC603



DC604



DC605



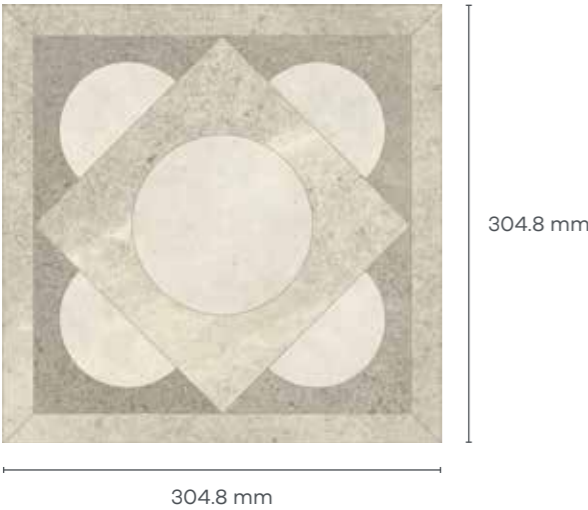
DC606

DC603, Trevellas Oak Plank Border & Stripwood Field

# Corinthian

Inspired by the beautiful ornamental ceiling designs found throughout Kedleston Hall, Corinthian uses contrasting stone combinations, to reflect the light and shade seen throughout the relief work in this beautiful building.

Assembled Tile



Individual precision-cut pieces, supplied in a pre-assembled and taped module.

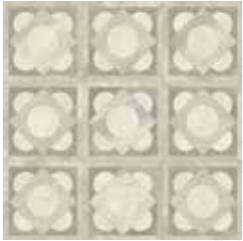
Amtico Décor ×  National Trust

3 Colourways 1 Pattern



## Inspiration Story

Inspired by the ornate and delicate plaster work found on the ceiling in the Ante room at Kedleston Hall.



DC620



DC621



DC622

DC620, Pinstripe Bold Border, Waterloo Concrete Perimeter Tile & Berkswell Stone Field

# Temple Diamond

A beautiful diamond pattern that takes influence from intricate ceiling decoration found in Kedleston Hall's Grand Saloon. Three balanced marble combinations offer eye-catching and authentic feature solutions for elegant spaces.

Assembled Tile A



304.8 mm

203.2 mm

Assembled Tile B



304.8 mm

203.2 mm

Individual precision-cut pieces, supplied in a pre-assembled and taped module. Modules should be alternated to achieve the pattern shown.

Amtico Décor ×  National Trust

3 Colourways 1 Pattern



## Inspiration Story

The diamond coffering that inspired Temple Diamond has a history of its own, inspired by the Temple of Venus, a ruin in the Roman Forum.



DC617



DC618



DC619

DC617, Grigio Marble Plank Perimeter & Kirby Oak Plank & Large Parquet

# Rosette Motif

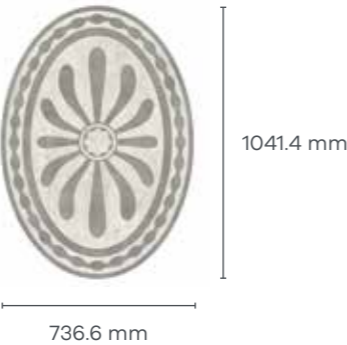
Influenced by the spectacular Marble Hall motif in Kedleston Hall, Rosette is a close likeness in both pattern and material to this famous 18th Century floor.

Delicate curved components are assembled within an oval border, framing a beautiful floral focal piece. Rosette is designed to sit seamlessly within a field of marble, making for an impressive entranceway that pulls on the grandeur of neo-classical design.

Rosette Large MC125



Rosette Small MC120



Individual precision-cut pieces, supplied in a single pre-assembled and taped motif (small) or 4 pre-assembled and taped sections (large).

1 Colourway  
2 Sizes



## Inspiration Story

Inspired by the Marble Hall floor, a beautiful piece crafted with local Hopton Wood stone and Italian Carrara marble.

# Victorian Star Large

Victorian Star Large reflects historic marquetry techniques through its geometry. The intricate shapes emphasise the natural wood grain's realistic contours to bring elegant luxury to any space.

Assembled Tile



304.8 mm

304.8 mm

Individual precision-cut pieces, supplied in a pre-assembled and taped module.

Amtico Décor ×  National Trust

1 Pattern  
2 Colourways



DC472



DC473

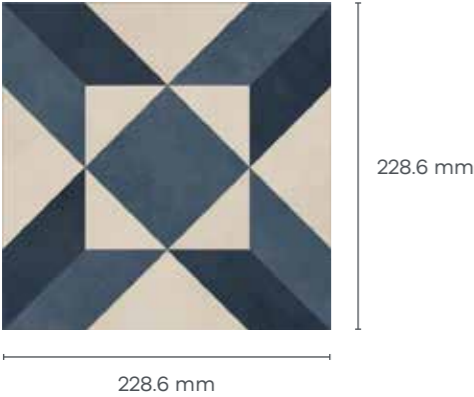
DC473, Double Plank Border

# Victorian Star Small

Reminiscent of encaustic Victorian floor tiles, this pattern marries considered colour and sharp geometric design to create a intricate star pattern.

Pair these bold colour combinations with our bevelled diamond border for an iconic look.

Assembled Tile



Individual precision-cut pieces, supplied in a pre-assembled and taped module.

Amtico Décor ×  National Trust

4 Colourways 1 Pattern



DC495, Bevelled Diamond Border, PinStripe Fine Border & Stucco Quartz & Stucco Indigo Perimeter Tiles, EP107 Worm Oak & Double Plank Border



DC494



DC495



DC624



DC471

# Octagon Key

Inspired by the Georgian era, this small scale pattern with its octagon shaped tiles is a decorative take on the classic key stone aesthetic.

Available in four highly useable stone colourways using the Signature Colour Edit palette and luxurious marble from the Signature collection.



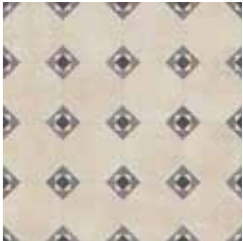
Supplied as a combination of individual precision-cut pieces, pre-assembled and taped (key) and octagon shaped tiles.

Amtico Décor ×  National Trust

4 Colourways 1 Pattern



DC497



DC625



DC499



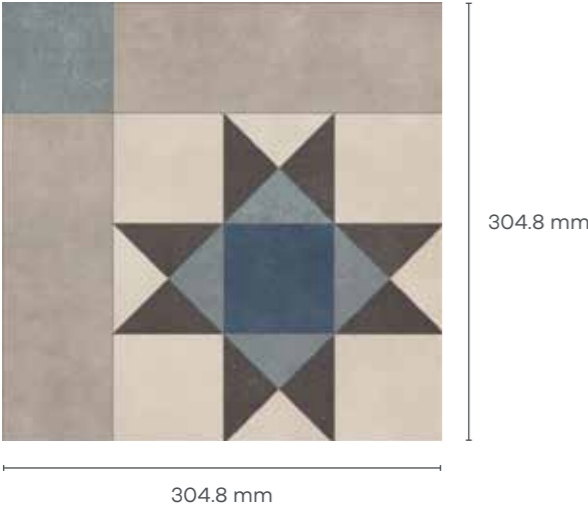
DC477

DC477

# Classic

From bold black and white to complementary colour combinations, Classic's kaleidoscope shapes create elegant floors with a modern take on an enduring pattern.

Assembled Tile



Individual precision-cut pieces, supplied in a pre-assembled and taped module.

5 Colourways 1 Pattern



DC623, PinStripe Medium Border & Diffusion Chambray Broken Bond Tile Perimeter



DC257



DC313



DC487



DC623



DC294

# Geo

Inspired by traditional tiled spaces of the Victorian era, Geo's simple square geometry makes a stylish impact in modest spaces, and works brilliantly as a rug feature in a complementary field.

Assembled Tile A



228.6 mm

228.6 mm

Assembled Tile B



228.6 mm

228.6 mm

Individual precision-cut pieces, supplied in a pre-assembled and taped module. Modules should be alternated to achieve the pattern shown.

4 Colourways 1 Pattern



DC488



DC489



DC482



DC490

DC489, Stucco Quartz Perimeter Tile, PinStripe Medium Border & Stucco Pebble Field Tile

# Echo

Echoing the design of encaustic and cement tiles, this simple combination of two colours creates a contemporary look which works as a full floor or as an impactful feature in modern commercial schemes.

Assembled Tile



Individual precision-cut pieces, supplied in a pre-assembled and taped module.

4 Colourways 1 Pattern



DC456 & Graphite Slate Tile Perimeter



DC491



DC456



DC492



DC493

# Chequer

This mini masterpiece comes in two perfectly balanced colour combinations, evocative of traditional tiled hallways. A versatile pattern, Chequer works perfectly for entrances and feature areas. It can be paired with any of our borders, or as a feature alongside Signature planks and tiles.

Tile A



101.6 mm

Tile B



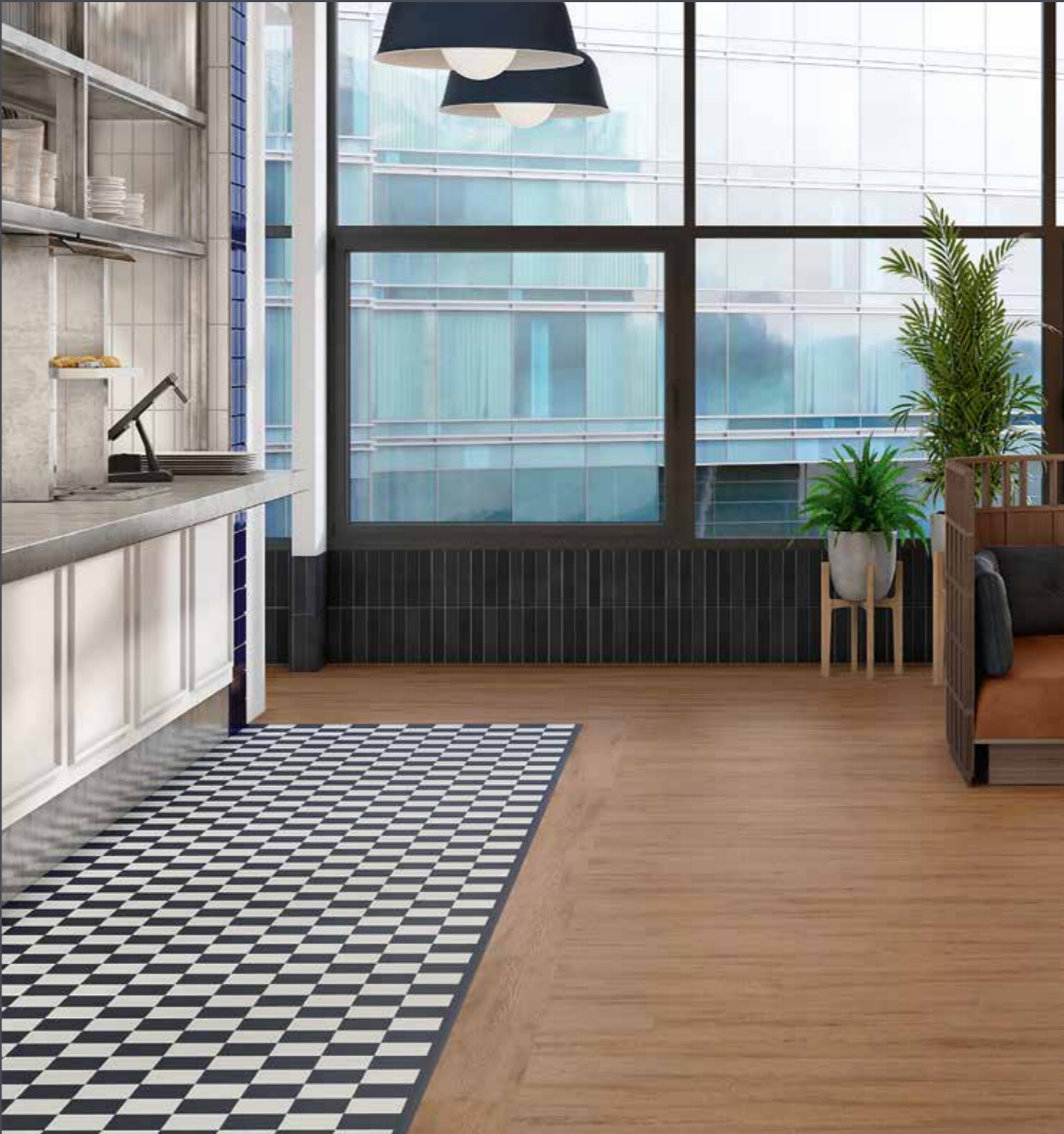
101.6 mm



20YR COMMERCIAL WARRANTY

Supplied as individual precision-cut pieces.

1 Pattern  
2 Colourways



DC500



DC485

DC485, Graphite Slate Strip & Rotterdam Oak Plank Border & Stripwood Field

# Borders and Corners

Choosing the right border has the power to transform a space. Useful for subtly zoning areas, drawing attention to an architectural focal point, or elegantly joining different flooring between rooms, borders undoubtedly elevate a room's aesthetic.



DC620, Waterloo Concrete, Berkswell Stone & Whitley Stone Pinstripe Bold Border

Borders are supplied as single fixed-length strips, or as individual precision-cut pieces in pre-assembled and taped lengths. Corners are supplied as individual precision-cut pieces in pre-assembled and taped modules.

Details of all our border and corner options can be found at [amtico.com](https://www.amtico.com)



DC615, Bespoke Stripping & Perimeter Tiles in Grigio & Nero Classic Marble & Encaustic Kyonite



DC495, Bevelled Diamond Border, Pinstripe Fine Border & Stucco Quartz & Stucco Indigo Perimeter Tiles



**Amtico UK & European Sales**

Solar Park Southside  
Solihull, West Midlands  
B90 4SH, UK  
+44 (0) 121 745 0800  
samples@amtico.com

**Iberia Sales  
(Spanish & English language)**

+44 (0) 121 745 0895  
Sales.southeurope@amtico.com  
Samples: info@amtico.de

**Amtico Head Office**

Kingfield Road  
Coventry  
CV6 5AA, UK  
+44 (0) 24 7686 1400  
samples@amtico.com

**Amtico International Germany**

Grand Bateau  
Hammer Straße 17  
40219 Düsseldorf  
+49 (0) 2131 359 16 0  
info@amtico.de

**Amtico International France**

36 Avenue Hoche  
75008 Paris, France  
+33 (0) 1 55 38 95 70  
info@amtico.fr

**Amtico International Scandinavia**

S:t Olofsgatan 11A  
753 21 Uppsala  
Sweden  
+46 (0) 8 584 233 24  
info@amtico.se

**Amtico International Asia**

Room 905  
9/F., OfficePlus @ Wan Chai  
303 Hennessy Road, HK  
+852 2327 7703  
samples@amtico.com

**Amtico International Middle East, Africa & India**

8th Floor  
Building Number 2  
J&G DMCC, Dubai, UAE  
+971 (0) 50 192 33 46  
samples@amtico.com

**Amtico International Pty Ltd Australia & New Zealand**

Unit 1, 40 Mill Street,  
Yarrabilba 4207  
Australia  
australia.customerservice@amtico.com

Visit [amtico.com](http://amtico.com) for more information on our product range, inspiring ideas, maintenance and installation advice. Every effort is made to achieve accurate reproduction of products in this brochure, however printing limitations can be misleading. Selection of products should be made from actual sample. Samples are small pieces cut from standard tiles. They give only a general indication of the design. Tone and shading can vary slightly from batch to batch and it is not possible to guarantee that the sample will exactly match the material supplied. The policy of the Company is one of continuous development and improvement and the right is reserved to add or delete from the range or change patterns without prior notification. All metric sizes are rounded. All products are manufactured in line with EN ISO 10582. Brochure correct at the time of printing.

amtico  
décor

amtico  
flooring

[amtico.com](http://amtico.com)