

ntgrate®

Nice to
integrate you.



Our strategy

3 pillars

A modern interior space featuring a large, abstract patterned carpet in shades of beige, grey, and dark blue. A contemporary armchair with a black and white patterned fabric and dark wooden legs is positioned on the right. A dark cylindrical side table and a floor lamp are also visible. The text "SUSTAINABILITY ACOUSTICS DESIGN" is overlaid in the center, flanked by two horizontal white lines.

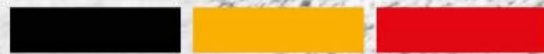
SUSTAINABILITY ACOUSTICS DESIGN

- Ntgrate wants to develop product concepts rather than products.
A large range of integrated woven vinyl solutions.
- These solutions are based on 3 pillars which form our dna:
sustainability, acoustics and design
- These 3 pillars are integrated in all our new developments
- We distinguish ourselves from our competitors on many points



A black and white photograph of a hand resting on a textured surface. The surface has a grid-like pattern, possibly a woven fabric or a technical material. The hand is positioned in the upper left corner, with fingers slightly spread. The lighting creates soft shadows, emphasizing the texture of the surface and the skin of the hand.

**The future is
innovating your past.**





A modern interior space featuring a large, colorful, geometric chandelier made of translucent, faceted glass pieces in various colors (red, blue, green, yellow, purple) hanging from the ceiling. In the background, a curved staircase with a wooden wall and a concrete railing leads upwards. To the right, a reception desk with a thick, dark, veined marble top is visible. A large digital screen on the wall displays a colorful abstract image. The floor is covered in a dark, textured carpet. In the foreground, a white, curved sofa is partially visible.

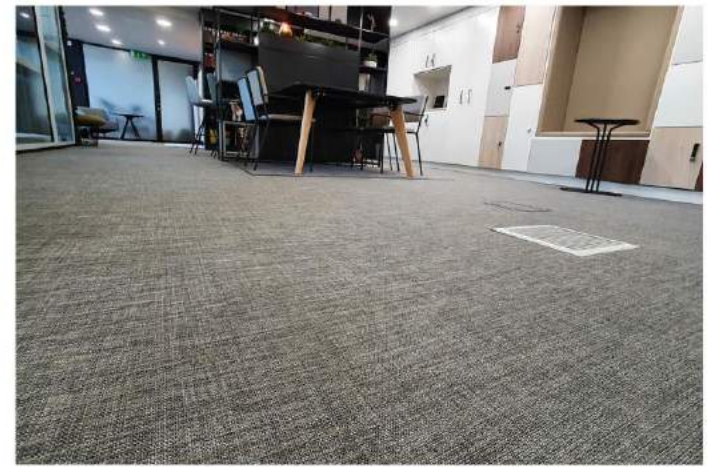
Experience Centers

EVOLIS KORTRIJK (BE) | CLERKENWELL LONDON (UK)





CLERKENWELL LONDON (UK)



Total Solutions

Embedded in our name :

- We love to integrate products in concepts
- We love to integrate with architects
- We love to integrate with clients

We want to create innovative total solutions, based on our core values (sustainability | acoustics | design) and offer them with great flexibility.



Flooring



Wall



Furniture



Rugs



Lighting

Our benefits



Sustainability

We strive for zero waste and invest continuously to systematically increase the sustainability of our production and products.



Greenfelt 22db.

- the natural eco layer -



Acoustics

Our acoustic solutions contribute to a higher level of comfort. With a reduction of up to 22dB, our Greenfelt solution is the quietest floor in the world. The acoustic backing is made of 100% recycled material.



Design

By collaborating with leading designers and trend studios, we keep our finger on the pulse of the ins and outs of the world of interior design.



Total Solutions

Ntgrate feels at home on your floor, wall or even in your furniture. Our acoustic solutions for floor, wall and furniture form an absolute top team.



Well Being

Ntgrate floors exceed the existing European standards for indoor air quality.



Service

Our advisors are happy to assist you. Ask them about our Quick Ship or brite lite collection. Or be a rebel!



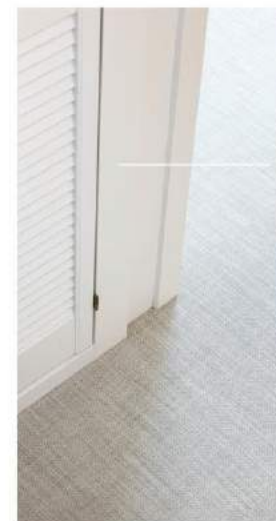
Light Reflection

Discover our brite lite collection. The floors with the highest LRV (light reflection value).



Seamability

Play with the laying direction for a beautiful or seamless effect.



Cleanability

A ntgrate floor is easy to maintain without the use of detergents.

Samples

Request your favorites
quickly at
www.ntgrate.eu.

Versatile

Playful shapes with
different designs and
colors.

Tiles, rolls,...

Available in rolls, tiles
or as klic (planks).

Rating systems

Get your BREEAM or
LEED certification with
ntgrate.

Markets served



hospitality



in-store



office

Sustainability

SUSTAINABILITY

Durability

- 100%** of our woven solutions are **thermofixated**
- 100%** **durable in both directions** due to our dense, square weaving structure
- 100%** **reinforced on both the yarn and backing**
- 100%** of our solutions are **Bfl-s1**
- 100%** of our solutions are **userclass 33 certified**
- 100%** of our woven toplayer is fixated to the backing by **thermal, mechanical and chemical anchoring** : extra wear resistant
- 100%** of our yarn is **fixated both thermal as chemical to the glass fibre core** : extra wear resistant
- 100%** **stain resistant** thanks to our dense weaving structure
- 100%** **impermeable** thanks to the integrated barrier
- 100%** **anti-bacterial**
- 100%** **colorfast** thanks to our own ntgrate production technology



SUSTAINABILITY

Responsibility

Ntgrate believes in a sustainable future and resolutely and exclusively opts for sustainable investments. The weaving of our high-tech vinyl total solutions takes place in our BREEAM certified new building in Kortrijk (BE).

The choice of the latest techniques in terms of production, logistics, energy and a focus on circular construction, is integrated into our method of working.

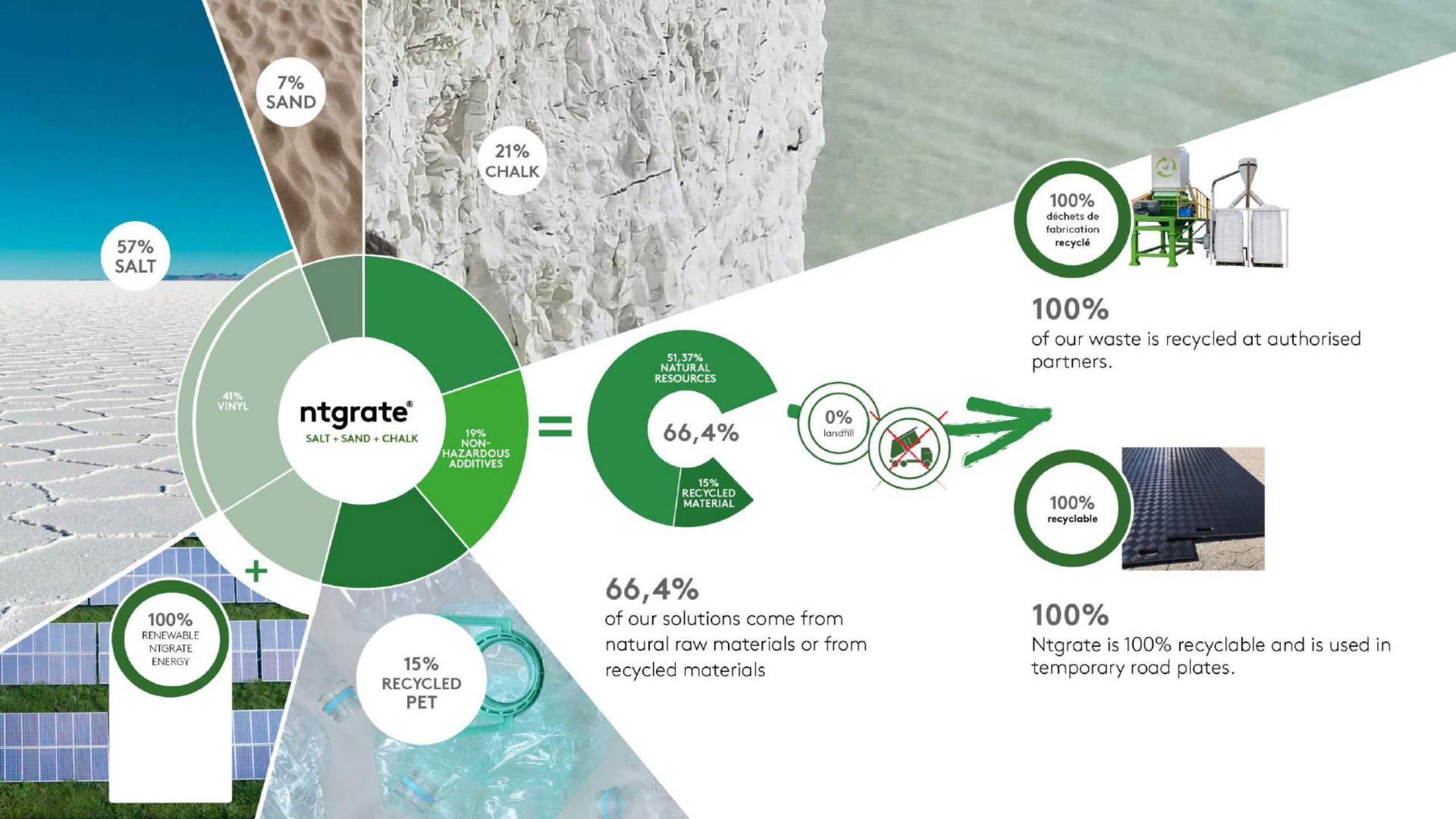
Let's Ntgrate!



100% committed

- 100%** local production. Made & designed in Belgium.
- 100%** of our floors contain recycled material. We aim for zero waste (reduce, recycle, reuse)
- 100%** of the energy required comes from renewable sources and our own solar panels.
- 100%** free of phthalates and heavy metals. REACH compliant and 100% safe.
- 100%** of rainwater is collected and sustainably reused.
- 100%** focused on developing acoustic solutions.
- 100%** of the light reflection values of our floors are known.
- 100%** investing in innovative technology.
- 100%** permanent quality guarantee (ISO 9001).
- 100%** low-maintenance.
- 400%** lifespan. Our floors are designed to last up to 4 times longer than classic textile floors !





SUSTAINABILITY
Recyclability



New technologies offer us the opportunity to be ever more thoughtful and economical with used raw materials. Thanks to circular and state-of-the-art sustainable solutions, we are producing in an increasingly environmentally friendly way and continually increasing the proportion of recycled material.

In addition, ntgrate is permanently integrating the 'recycle, reduce, reintgrate' principle into all production processes.

Let's Ntgrate!



SUSTAINABILITY

Reduce

- 33% reduction of product weight
- Reduction of cutting waste to 3%
- Reduction of second choice to 0,5%
- Reduction of CO2 emission through lighter products and use of green energy

Let's Ntgrate!



SUSTAINABILITY
Recycle



We are working on reintegrating our own waste in our own products and through innovation we strive to use also other recycable materials in our own products.

These new resources have to live up and exceed the standard of the resource they replace. This way we guarantee a continuous improvement of our own solutions.

Let's Ntgrate!

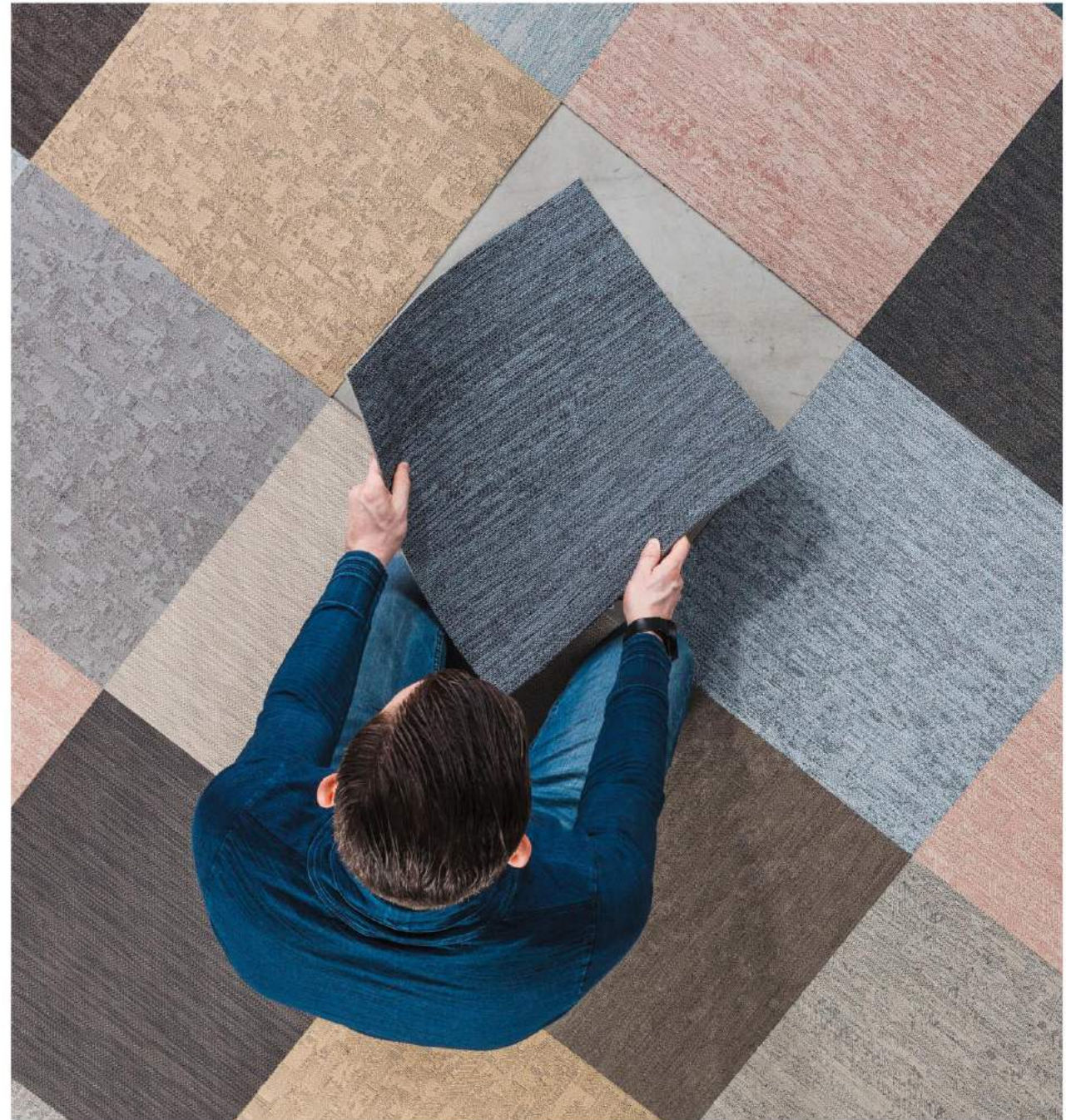


SUSTAINABILITY

Reuse

We work together with a recycling partner to reuse our waste for the production of other items. This way our waste gets a second life as resource for new items.

Let's Ntgrate!



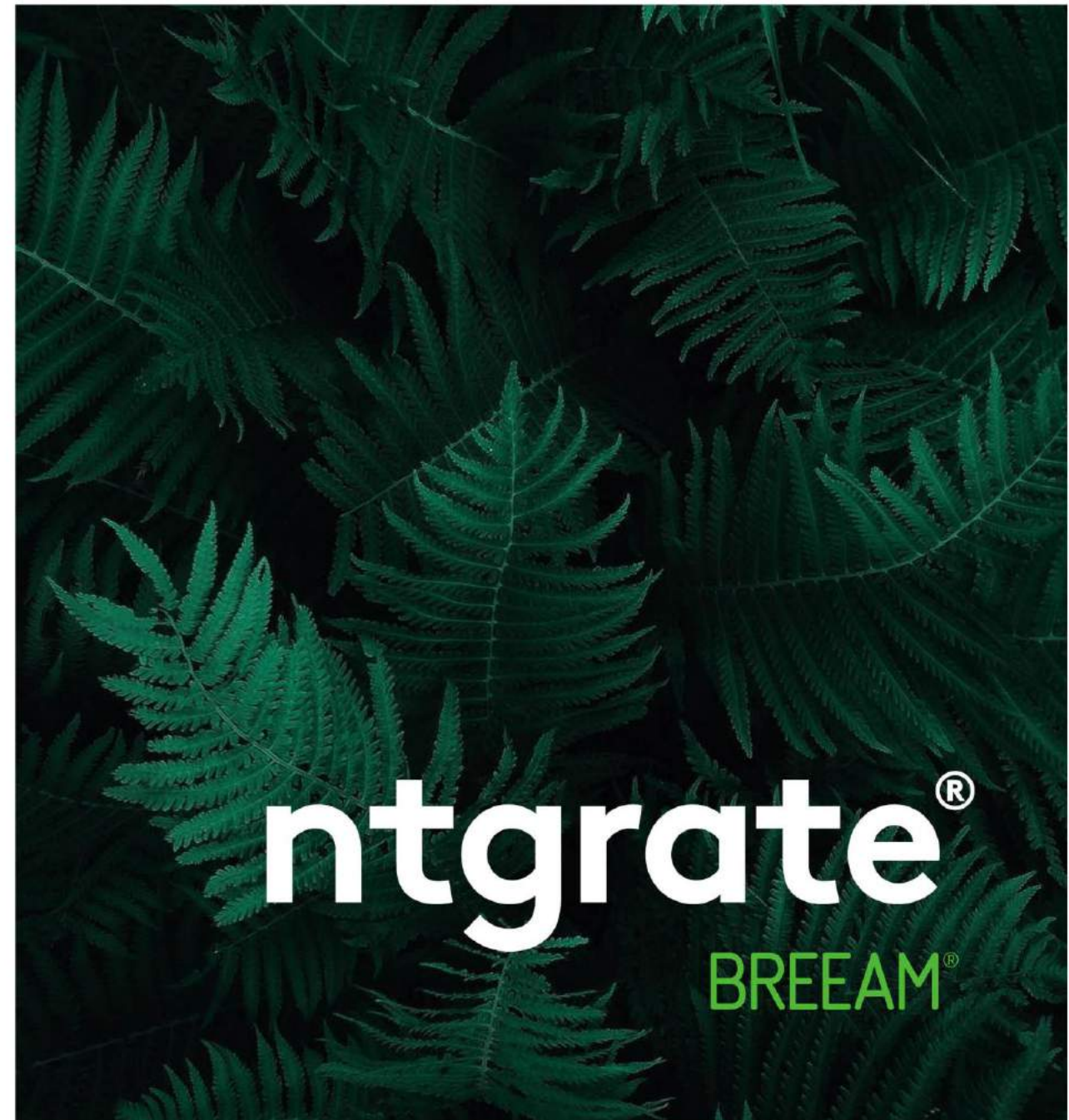
SUSTAINABILITY

BREEAM / LEED

Achieve 14 BREEAM credits with ntgrate.
We are proud that as one of the first Belgian flooring brands, ntgrate can advise you in achieving your BREEAM certification.

By using the ntgrate flooring solutions, no less than 14 BREEAM credits can be achieved. The feasibility of achieving these credits was analyzed and confirmed by the independent and qualified engineering firm, Encon.

Let's Ntgrate!



SUSTAINABILITY

Lead by example

Our own offices and our production unit are BREEAM certified. They exceed the current national standards in terms of sustainability and environmental impact.

Let's Ntgrate!



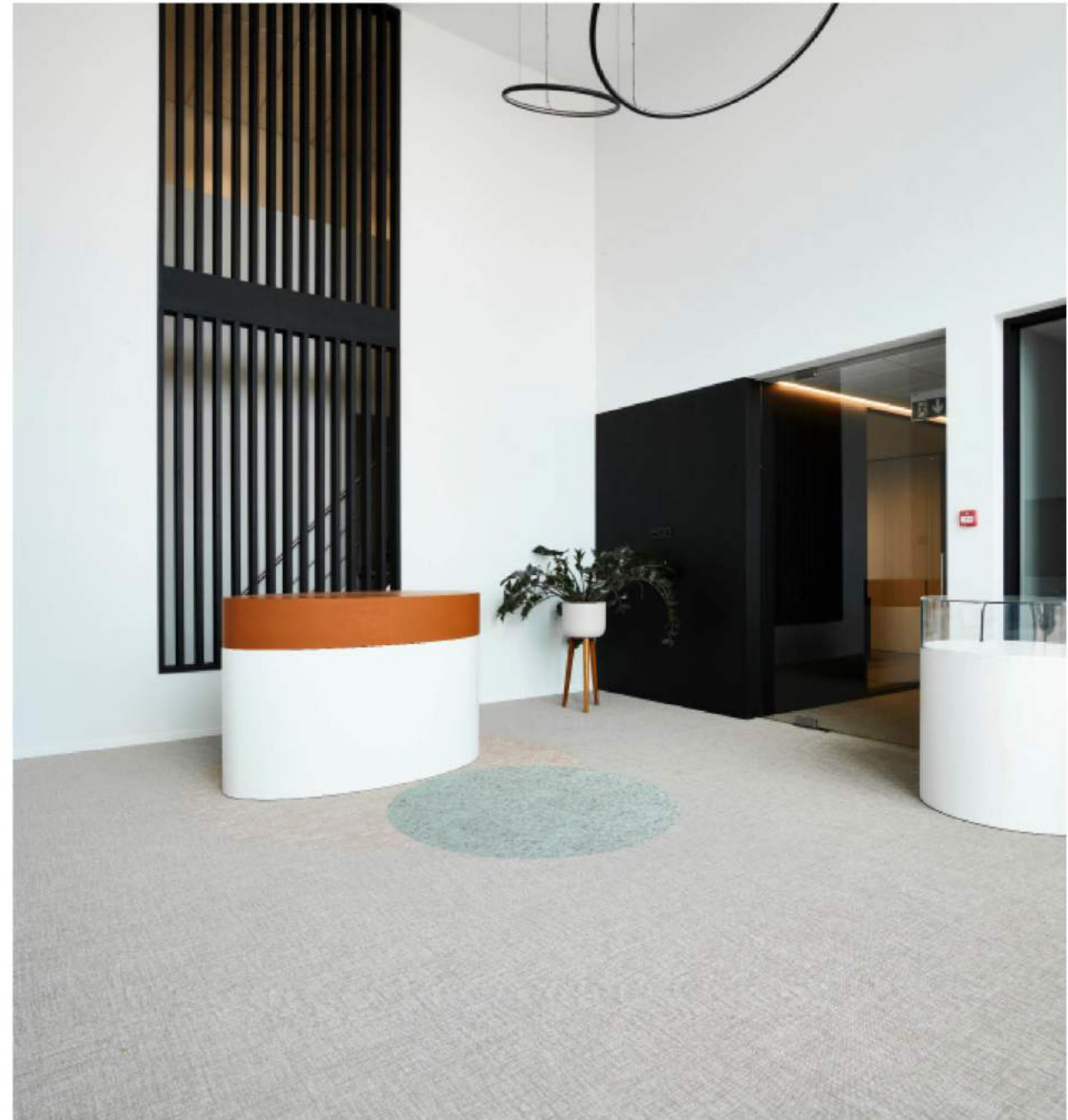
SUSTAINABILITY

Brite Lite

Tested light reflectance value

All ntgrate floors are tested by an accredited test center. This allowed us to make the brite lite selection. Our floors with the highest LRV score.

Let's Ntgrate!



brave



Luce LRV 25,0



Charles LRV 24,8



Sam LRV 23,5

crisp



Peter LRV 20,7

fair



Alice LRV 42,2



Amber LRV 21,3



Astrid LRV 30,8



Aurelie LRV 33,4



Aurore LRV 43,9



Celine LRV 24,3



Dahlia LRV 29,2



Ella LRV 32,0



Florence LRV 28,2



Gwen LRV 43,6



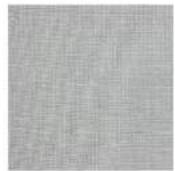
Helena LRV 44,1



Jasmin LRV 42,2



Laura LRV 32,4



Liam LRV 33,9



Lucas LRV 41,3



Myrthe LRV 36,3



Naomi LRV 30,8



Noah LRV 27,0



Pia LRV 22,0

gentle



Ellis LRV 28,0

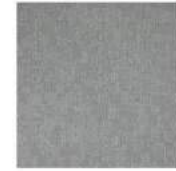


Oliver LRV 25,1

noble



Benjamin LRV 27,3



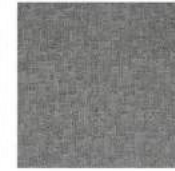
Sylvere LRV 26,4



Jacqueline LRV 24,9



Lily LRV 21,6



Madeleine LRV 20,5



Mulan LRV 32,1



Theodore LRV 27,3



Willem LRV 27,7

sage



David LRV 21,1



Octavie LRV 38,7

shy



Fee LRV 49,2



Nina LRV 26,2

strong



Lea LRV 27,9

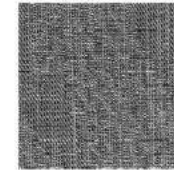


Andreas LRV 21,6



Luca LRV 25,0

sharp



Blanca LRV 24,6



Claire LRV 36,5



Pearl LRV 43,7

soft



Daniël LRV 21,8



Sophie LRV 41,9



Tess LRV 31,3

wild



Leon LRV 22,4



Julia LRV 26,1

SUSTAINABILITY

Well Being

Our ntgrate floor coverings contribute to a healthy living and working environment.

- Emission of VOC for below standard
- No hazardous substances
- Acoustical comfort
- Hygienic
- Certified

Let's Ntgrate!



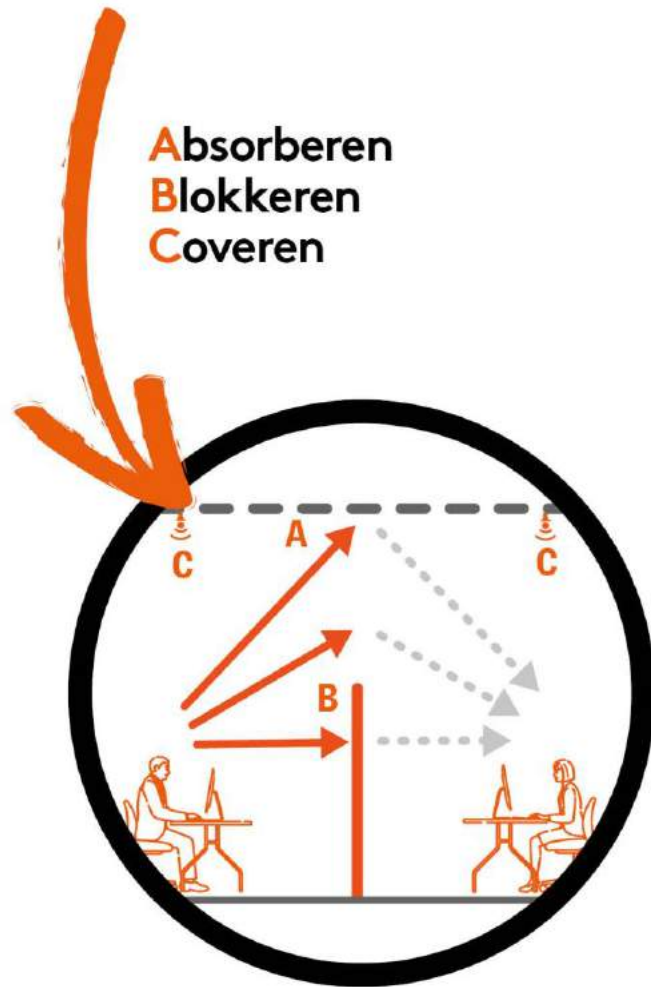
Acoustics



Elements for good acoustics :

- Control of reverberation and speech intelligibility
- Sound insulation
- Background noise control
- Layout and acoustic sightlines
- Look-and-feel

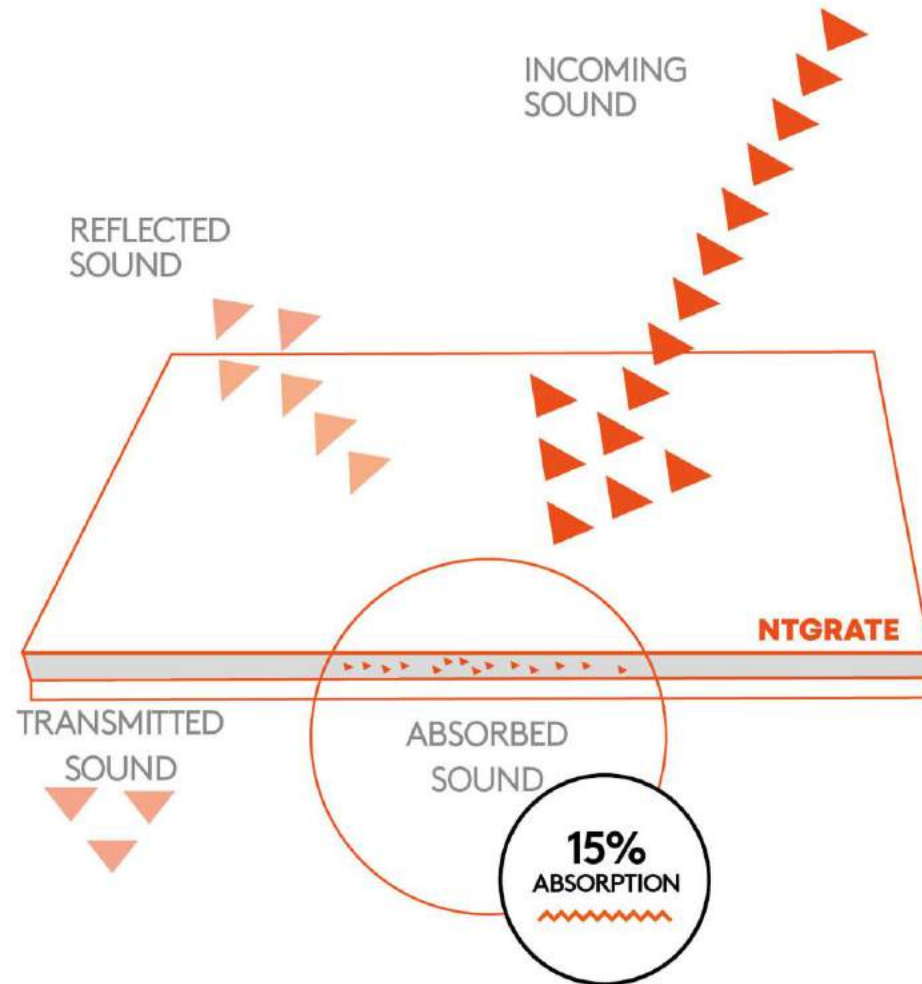
ABC van akoestiek



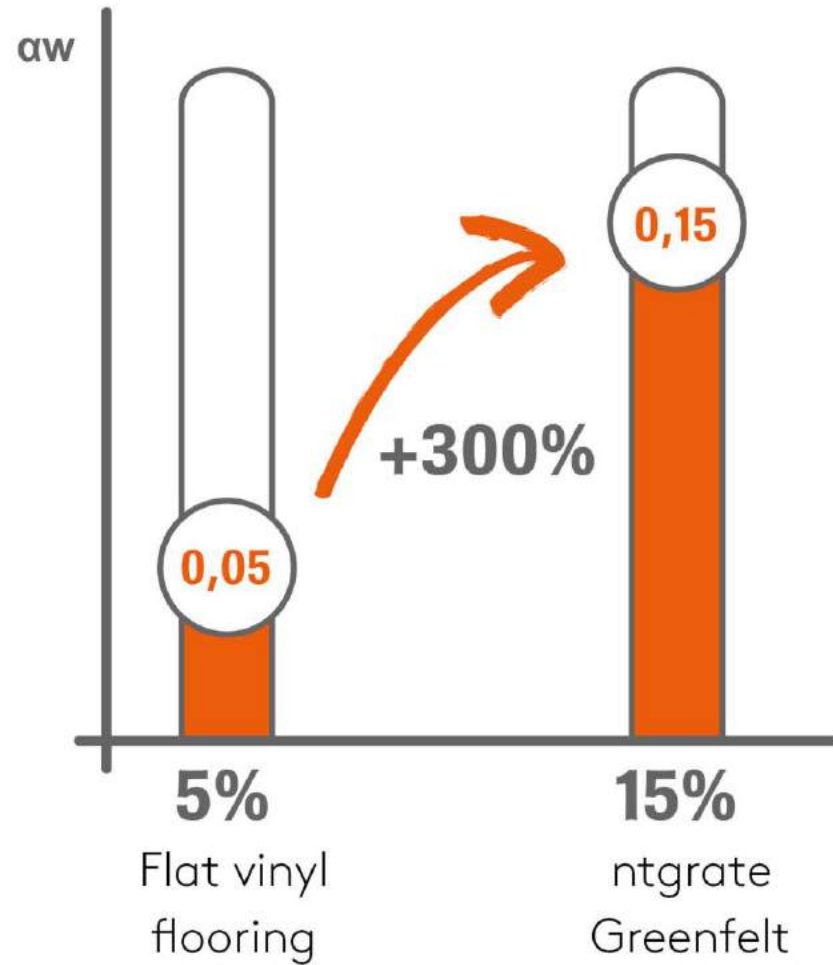
Ntgrate is a trendsetter in acoustic design solutions based on woven vinyl.

Absorption (ISO354)

The textile structure of the ntgrate floor covering achieves a high acoustic absorption value of 0.15 (15%). That is 300% more sound absorption than conventional flat vinyl flooring.

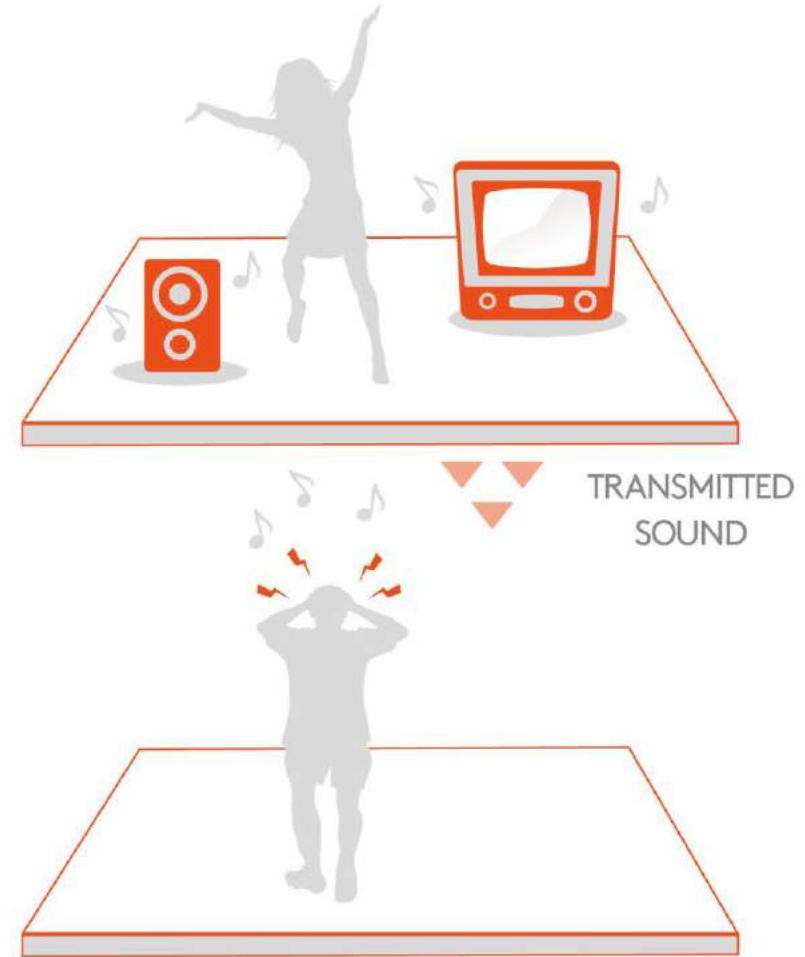


Absorption (ISO354)

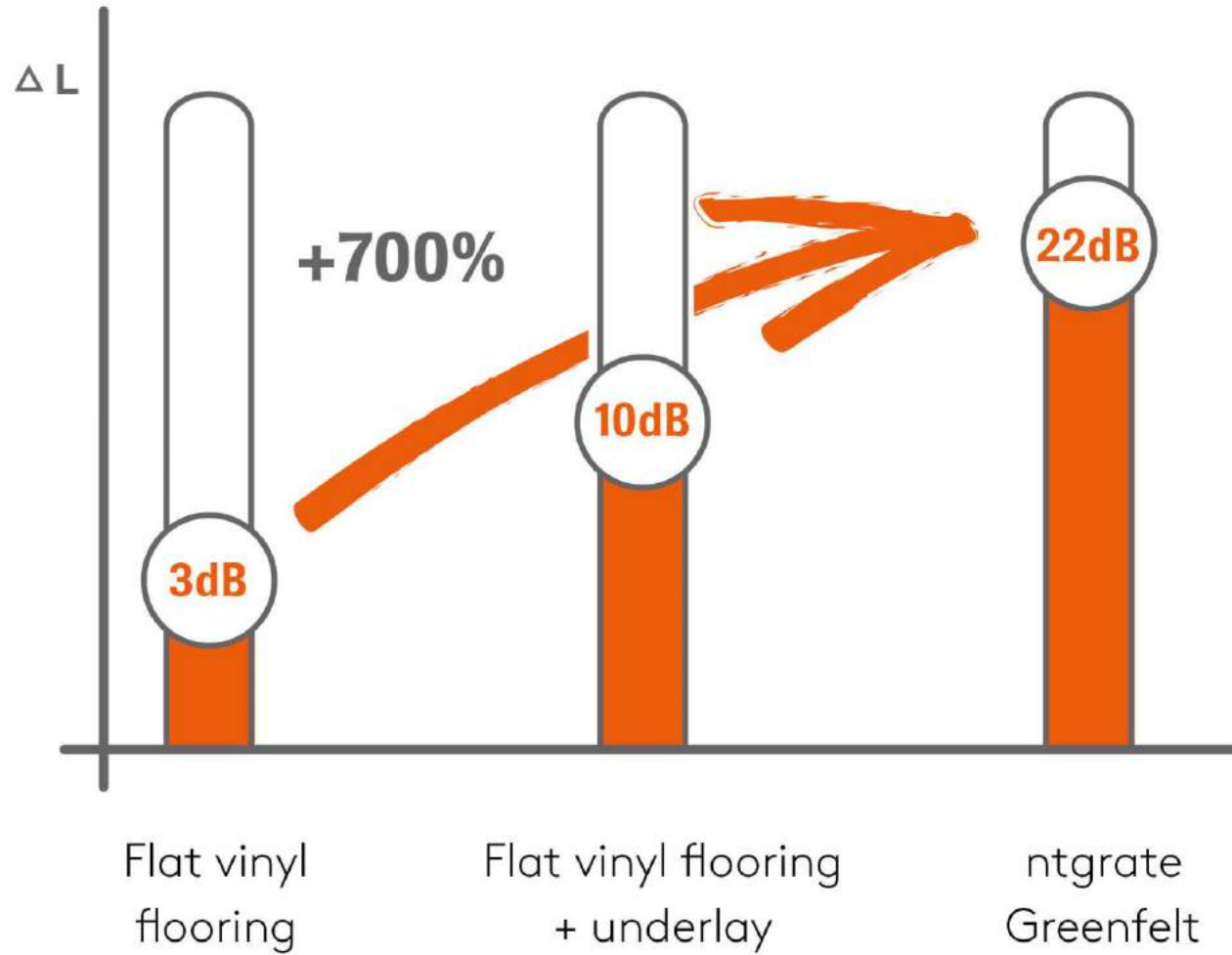


Impact sound reduction (ISO 10140-3)

Impact sound is the sound you perceive in the underlying space. Ntgrate offers you its Greenfelt acoustic solution with an impact sound reduction of up to 22dB. This with a height of only 5.2 mm.



Impact sound reduction (ISO 10140-3)

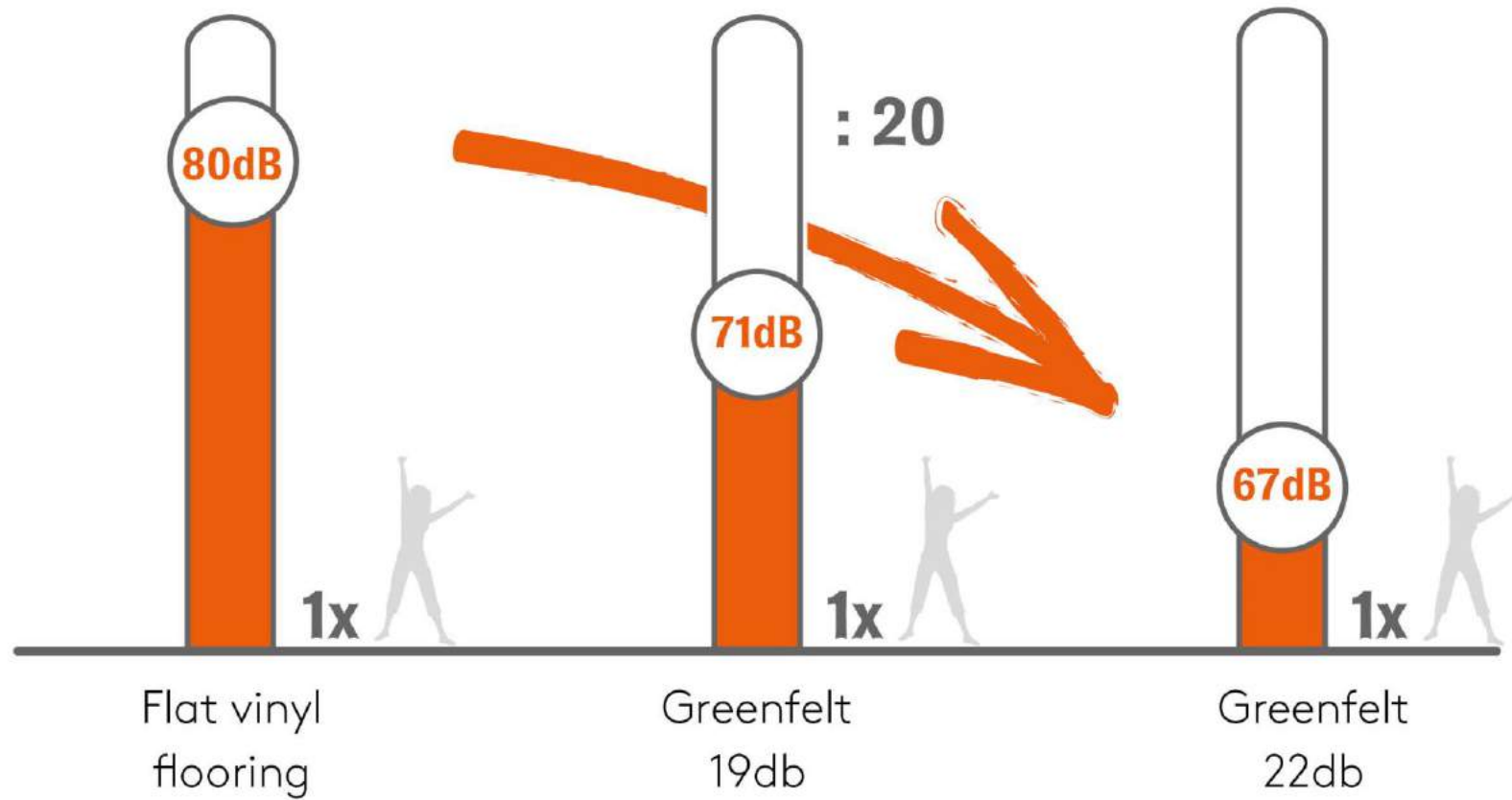


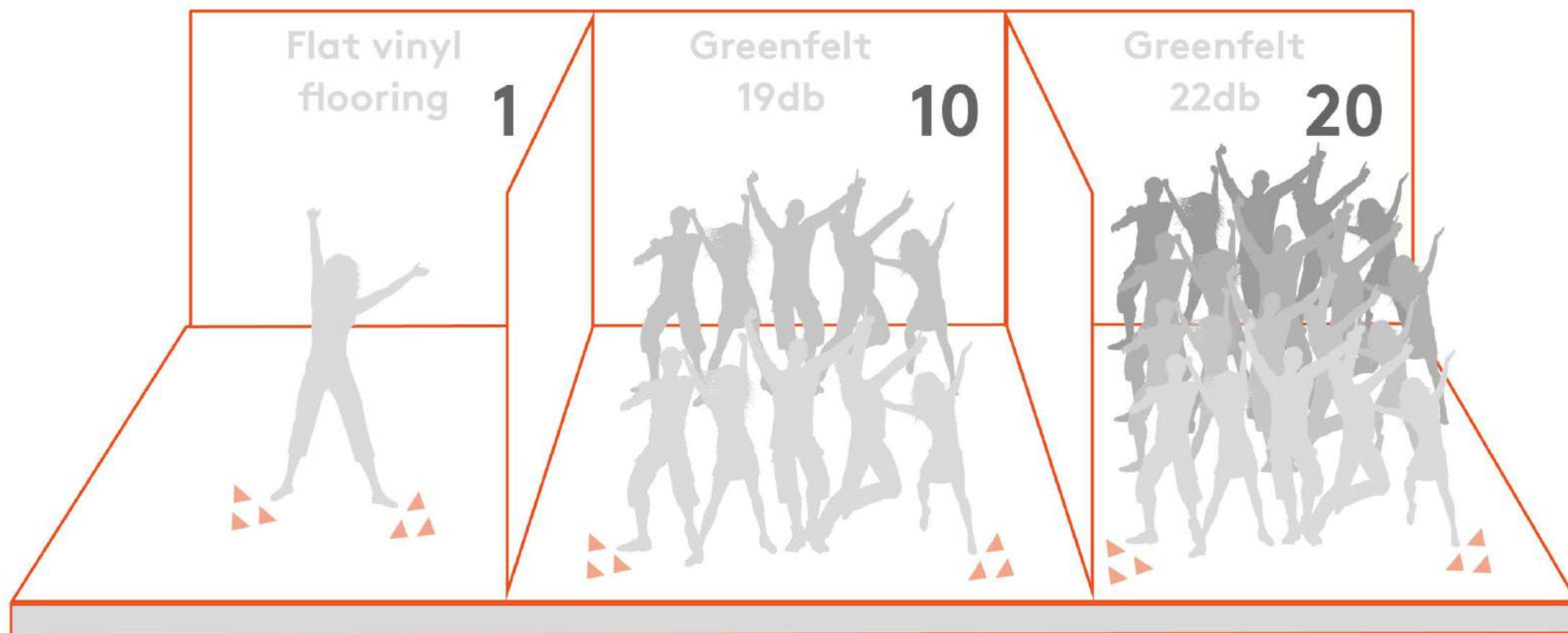
Drum noise (EN 16205)

Ntgrate pays special attention to the drum noise of Greenfelt flooring. An underestimated acoustic value of flooring. Nothing as annoying as the sound of steps through a hotel, shop or office environment.



Drum noise (EN 16205)





ACOUSTICS

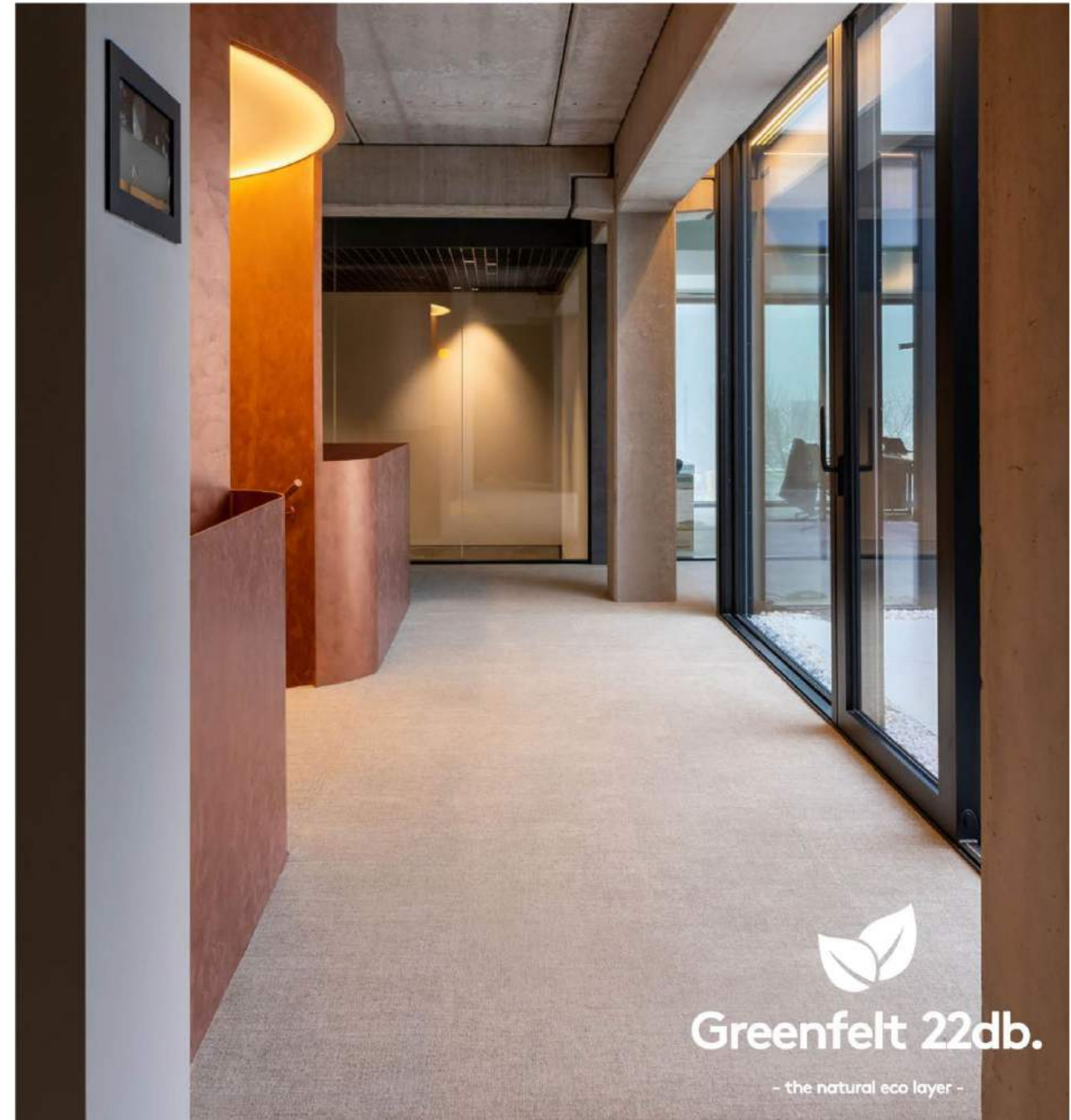
Greenfelt

Our Greenfelt backing is our natural eco layer made of recycled material. It is an acoustic backing available in 19 or 22dB version.

The purpose of Acoustic Design :

- Decreasing stress and anxiety levels
- Preserving hearing
- Aiding in concentration
- Reducing or minimizing hypertension
- Improving speech communication

Let's integrate!



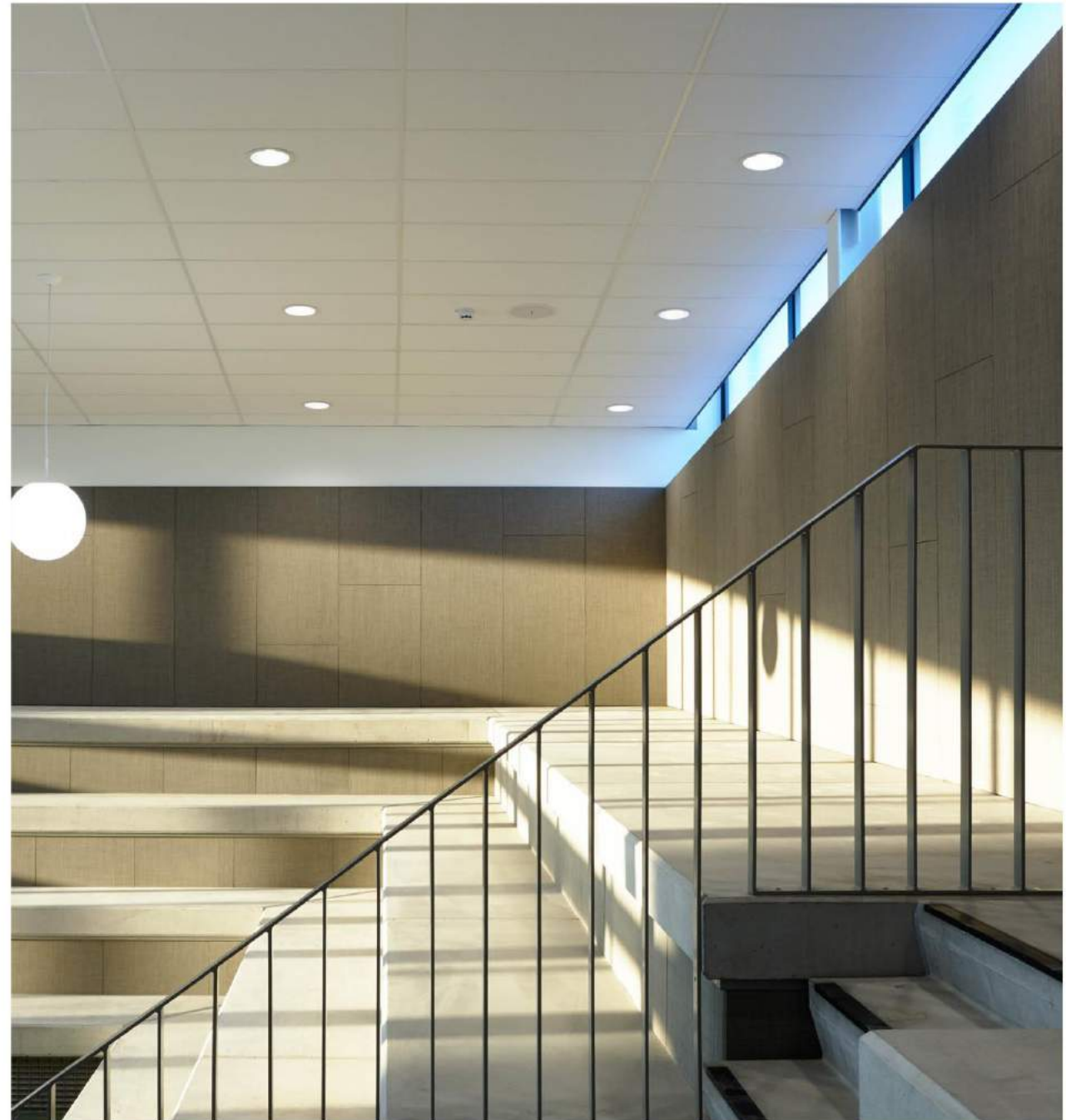
ACOUSTICS

Integration

Our innovative acoustic technology can be easily integrated in other aesthetic acoustical solutions. Our acoustic wall panels offer an easy, durable and aesthetic solution to take acoustical architecture to the next level.

Our flexibility towards architects and designers has led to the integration of our acoustical solution in furniture, lighting, ...

Let's integrate!





Vloerbekleding




Greenfelt 22db.
- the natural eco layer -



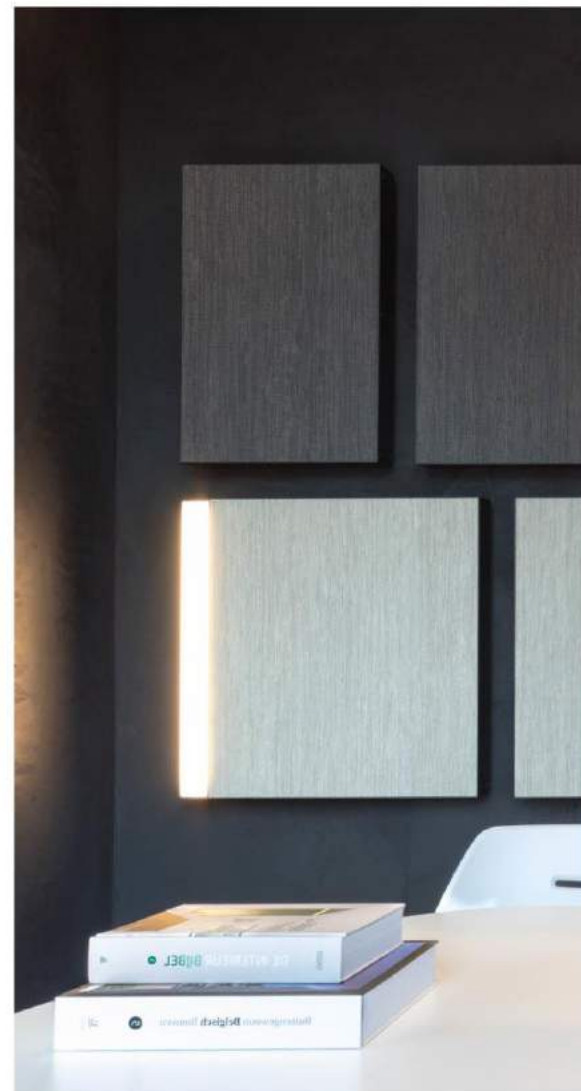
Wandpanelen

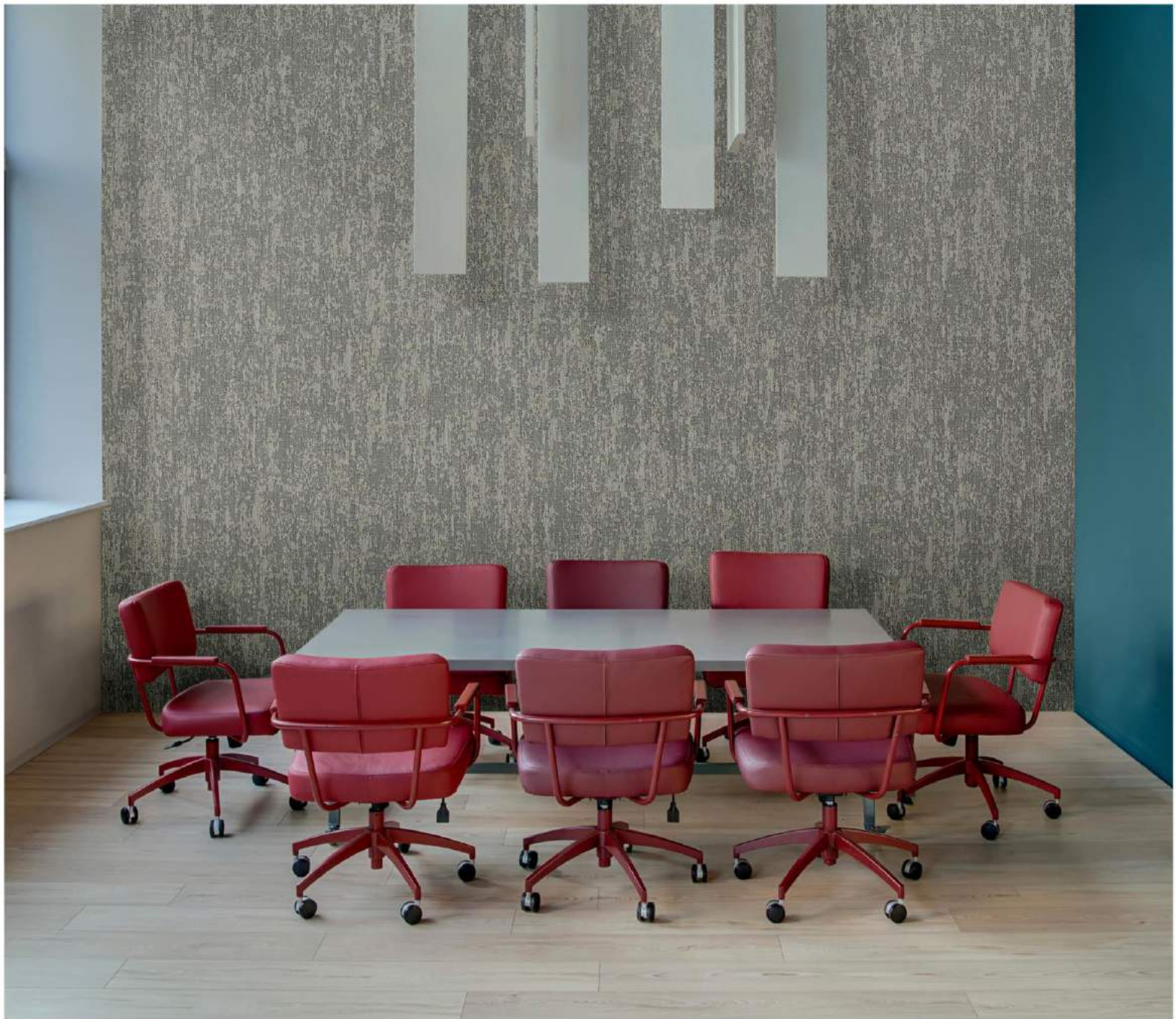


Deurpanelen



Verlichting





Design

DESIGN

Pushing boundaries

Our designers and technicians went out with trend watchers, fashion designers and color experts. All over the world they found from retro photography in Berlin to modern art in New York.

The result?

An extensive collection of floor coverings with unique and distinctive shapes, colors and characters.



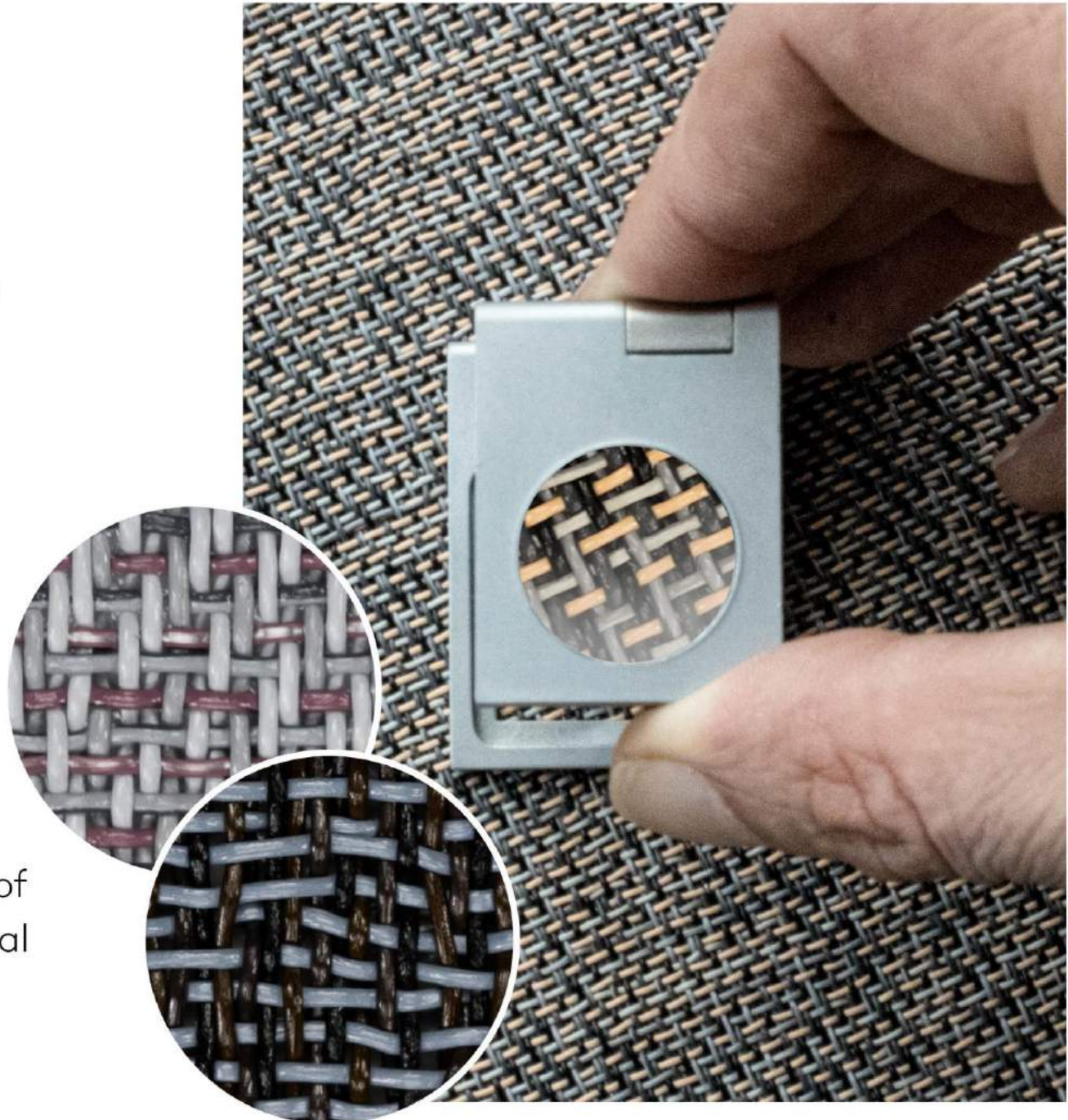
DESIGN

Our design secret

In weaving, weft threads and warp threads are woven. Warp threads are stretched on the loom and weft threads are woven perpendicular to the warp.

Our equal division between warp and weft allows for an infinite number of creative possibilities.

It allows us to weave patterns that are warp- or weft-dominant. Combined with the pattern, we thus create a wide variety of full and rich colours in addition to traditional neutral colours.



DESIGN

Collections

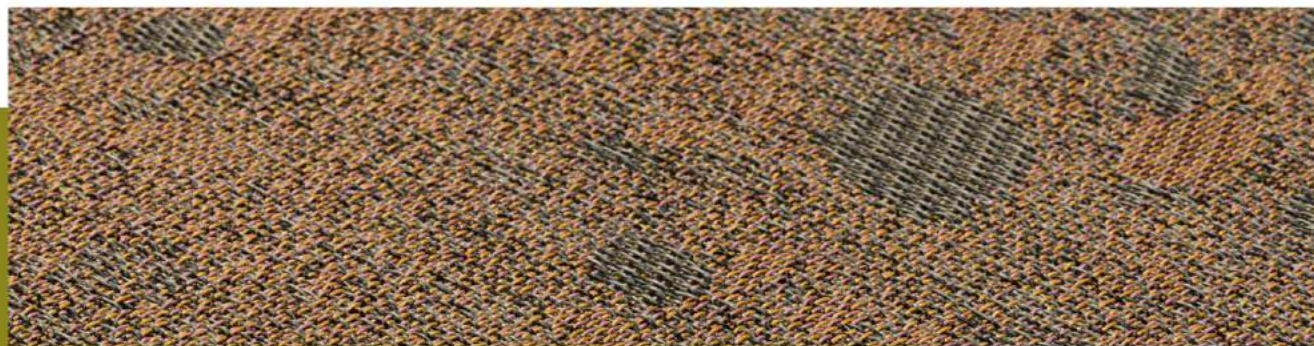
As an architect or client you are completely free to combine our patterns and colors as you like. Based on contemporary and future trends, we have already created 4 'moods' with matching colors and an endless variety of patterns and laying possibilities.

TRIBE | CLAN | CREW | CORE





Soft, earthy tones and organic shapes reference nature.
Tribe is in touch with the earth, deeply rooted or reaching
for the sun.

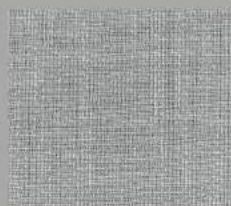
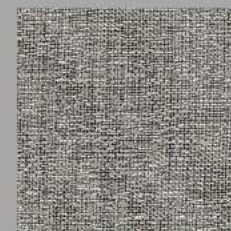


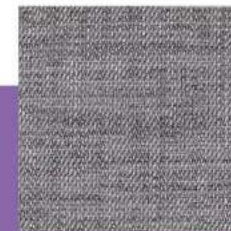
Tribe

Clan

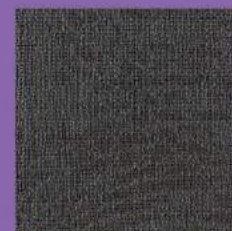


Unwind with our Clan collection with beige and gray tones. Clan brings you closer to yourself. Serene, calm and with a fun Scandinavian design vibe.



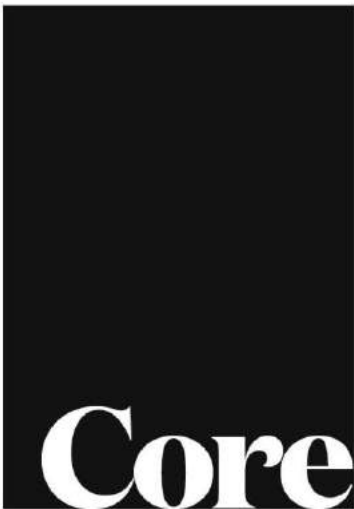


Alien beauty. The Crew collection takes you to another dimension. With misty pearl grey and milky lavender.



Crew





The Core collection with its soft pattern is a timeless collection. Always applicable and combinable in contemporary or classic interiors.

DESIGN
Versatile

To give your floor an extra touch, Belgian designer Gerd Couckhuyt created 5 cut shapes: from the bold Bean to the futuristic Flowerz.

Play with the shapes and laying direction until your puzzle fits.

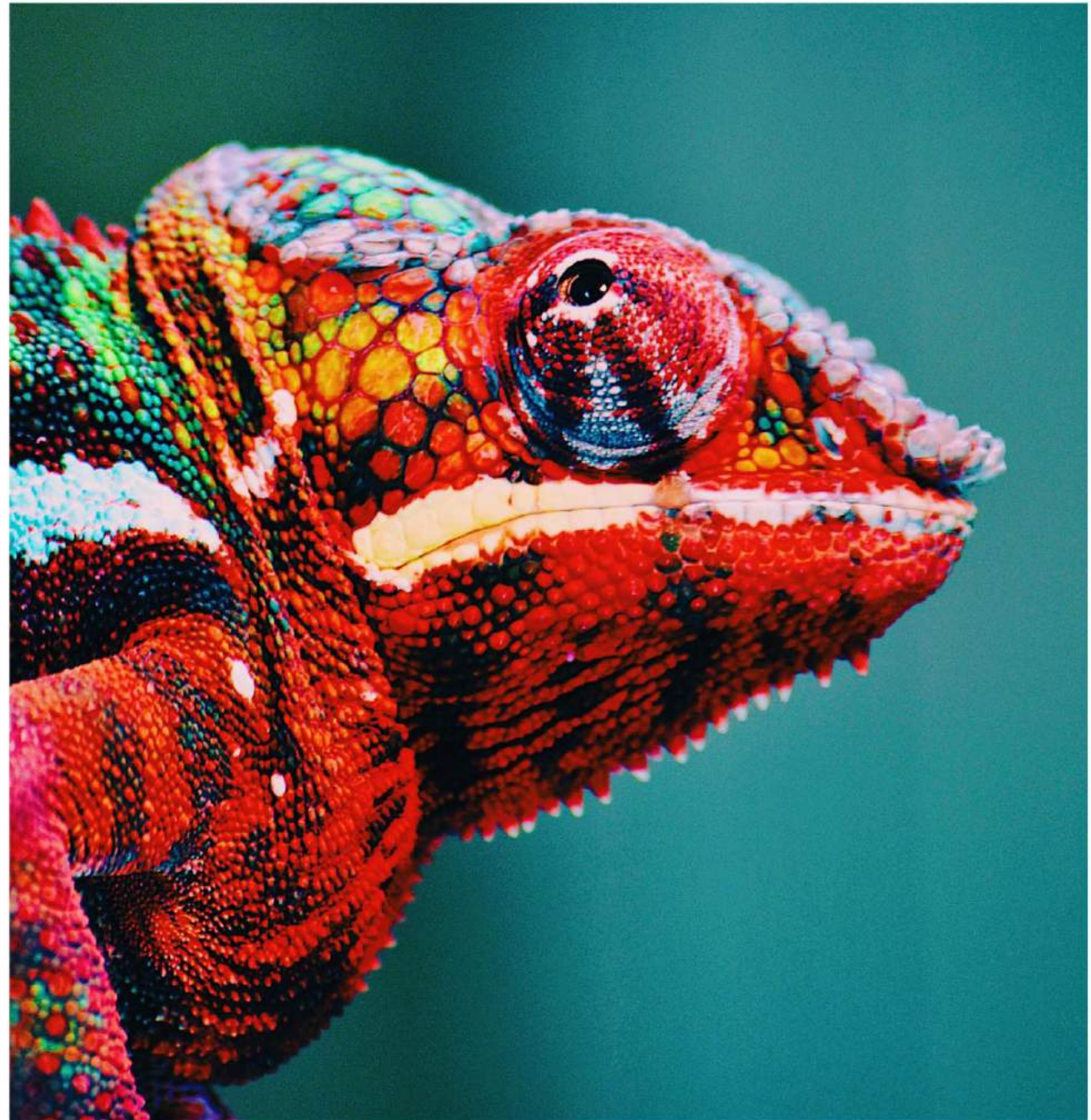


DESIGN
Rebel

David Bowie was lyrical about his rebellion. To encourage people to go on a journey into their own rebellious corner. To come back with a rebellious look in their eyes and a head full of ideas and colors.

ntgrate offers color on demand.

Architects and designers are not limited by our choices. Instead they can pick any color they want and we will create the perfect woven floor for him, in the colors and pattern of his desire.





MAINTENANCE

Cleanability

Enjoy all the advantages of a comfort floor without the disadvantages of a textile floor:

Let's ntgrate!

ntgrate		Textile floors
✓	Acoustically superior	✓
✓	Soft look and feel	✓
✓	Luxurious look	✓
✓	Warm underfoot comfort	✓
✓	Suitable for underfloor heating	✓
✓	Modular*	✓
✓	Suitable for mechanical cleaning	✗
✓	Wet cleaning with water only	✗
✓	Loose fibres	✗
✓	Colourfast	✗
✓	Cleaning without detergent	✗
✓	Easy stain removal	✗
✓	Removes up to 99% of all dust, bacteria and...	✗
✓	Antibacterial	✗

CLEANABILITY

Air Quality

More than 85% of our time is spent indoors. However, indoor air quality is poorer and contains more air pollutants and allergens. Finer particles penetrate our respiratory system and cause serious damage.

Long-term exposure can even cause cardiovascular disease and cancer. High time to take this into account.

Let's integrate!



2000/cm³

An average of 2,000 ultrafine dust particles swirl around in every office. Per cm³! This fine dust is harmful to health and leads to respiratory problems, fatigue, headaches, irritation,... On average, humans ingest 2 spoonfuls of fine dust per day.

CLEANABILITY

Air Quality

How can ntgrate flooring improve air quality?

An ntgrate floor attracts and retains dust. This reduces the inhalation of natural allergens such as house dust mites.

In addition, all ntgrate solutions are hypoallergenic and antibacterial.

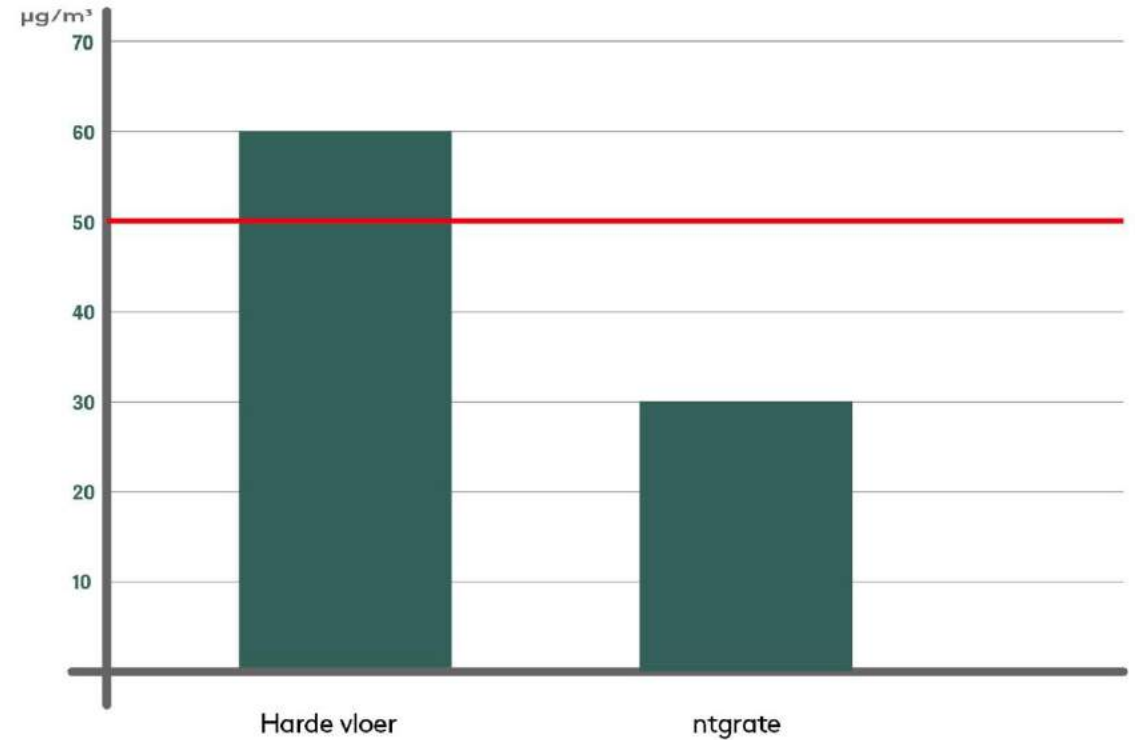


NTGRATE

CLEANABILITY **Air Quality**

The set standard for fine dust indoors is $50 \mu\text{g}/\text{m}^3$.

The average amount of fine dust in an office with a hard floor is 2x higher than with a ntgrate floor. The set standard is therefore exceeded. Offices with ntgrate flooring score significantly lower and within the standard at $30.4 \mu\text{g}/\text{m}^3$.



CLEANABILITY

ntgrate is

- ✓ Is hypoallergenic and antibacterial
- ✓ Captures and retains dust
- ✓ Has the lowest emissions in the construction sector (VOCs)
- ✓ Contains no hazardous plasticisers

CLEANABILITY

Correct maintenance

Correct maintenance is your guarantee of increased longevity and perfect hygiene. And your floor will retain its beautiful aesthetics and original colour. After all, all our solutions are colourfast.

Act proactively!

Invest in a good dirt collection system. This will catch up to 85% of dirt. Prevention remains, despite the ease of maintenance of a ntgrate floor, better than cure.



NTGRATE

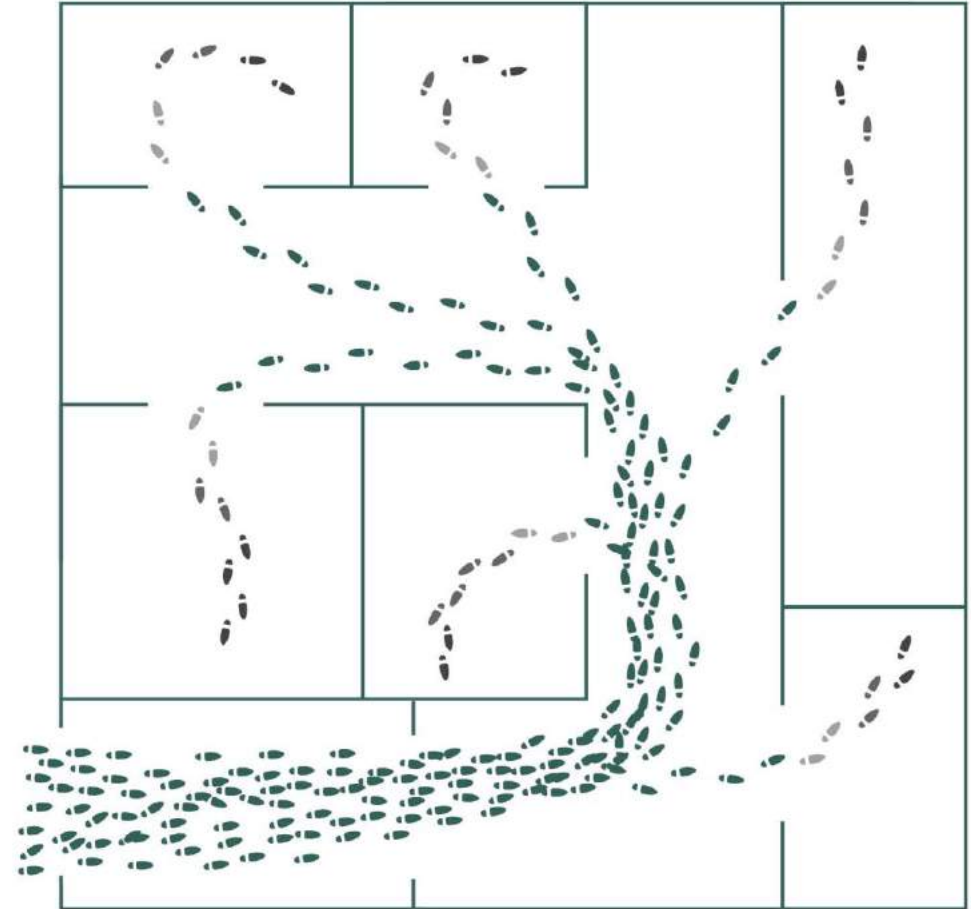
- 1 Wet dirt** An outdoor carpet/mat catches wet dirt.
- 2 Sticky dirt** A brush zone (if any) removes sticky coarse dirt.
- 3 Dust** A washable dirt trap mat captures residual dust, soil,... up.

CLEANABILITY **Prevention**

Some preventive measures reduce the need for periodic maintenance.

Some spaces are used intensively, others less so. It is wise to adjust the maintenance schedule accordingly and implement some preventive measures such as a clean walking zone and dirt collection system.

In high-traffic areas, you can opt for a darker tile with an irregular pattern.



ENTRANCE

Traffic intensity

The dirt load depends on the implantation in the building. Zones closer to the entrance require more frequent maintenance.

CLEANABILITY

Maintenance



Daily maintenance

Vacuuming is perfect as daily maintenance. Any stain can be removed immediately and easily with a clean cloth and some water.



Periodical maintenance

In certain situations, thorough mechanical cleaning is required. The interval depends on the dirt load and application.

Thanks to its multi-layer composition, ntgrate 3D woven vinyl floor covering does not absorb water and is water impermeable.

CLEANABILITY

Maintenance

category	woven vinyl	textile floors
Stain removal	Most stains can be easily removed without detergent.	Frequent thorough cleaning procedure required.
Resistant	No absorption of dirt or liquid due to water-impermeable backing.	Sensitive to dirt
Looks	Immediate stain removal keeps the floor looking nice and neat even between maintenance sessions.	Thorough maintenance for stain removal is needed : floor looks dirty in intermediate period.
Costs	Less periodic maintenance required.	Requires more frequent maintenance.

DESIGN

Seamability

Ntgrate can be laid with almost no visible joints -
do you prefer it flashy?
You can also accentuate the joints by playing with
colour, laying direction and design.

Design know-how to create seamability.



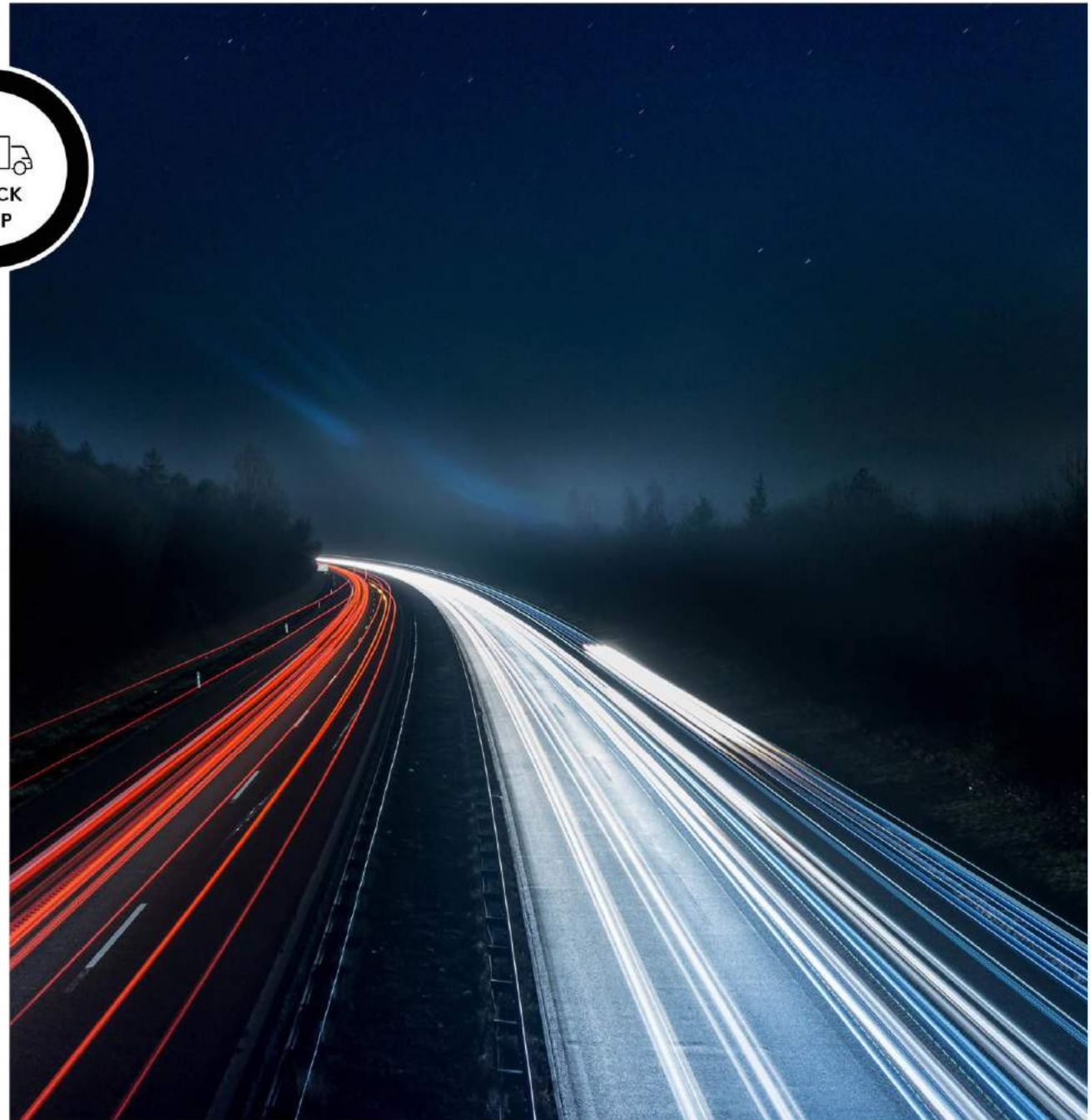
Service

SERVICE
Quick ship



Sometimes things have to move fast. And that's when ntgrate is there for you with a strategic stock of commercial designs and colors. This stock with Greenfelt 22dB backing can be installed seemingly seamlessly, is Class 33 approved for intensive commercial use, fire resistant and exceeds all applicable health and safety standards.

The Core collection includes the entire Soft collection.



**Come and
visit us**



**let's design an acoustical &
sustainable future together**